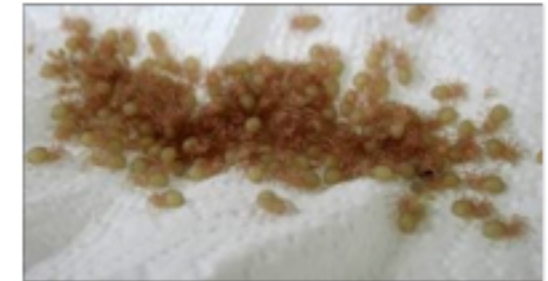




Female lays her eggs in a silk egg sac. She lays hundreds of eggs.



The spiderlings hatch from their eggs and start eating each other.



The baby spiders can't stay long as they will start to eat each other. They have to get away to and start to build a sticky and silky web. They catch insects to feed and grow.

Lifecycle of spiders



The spider pumps saliva into her prey then waits for her saliva to dissolve her food before sucking it back up in her stomach.



When the female is fully grown she is ready to lay her own eggs.